

FARMOUT FLYER

UDAN EMAS PSC

Onshore Bintuni Basin, Indonesia Investment Opportunity



KrisEnergy is seeking a partner to participate in the Udan Emas PSC. Udan Emas is a unique entry opportunity into frontier exploration in a proven play with multi-TCF gas potential.

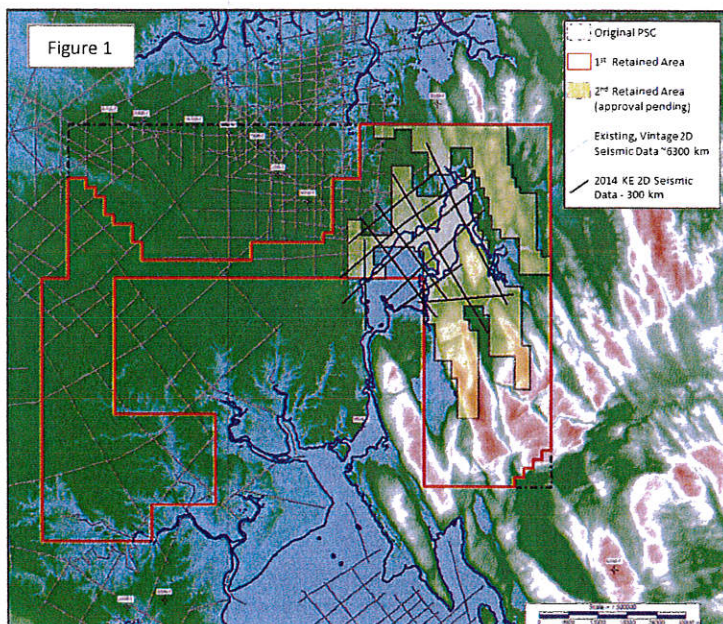
About KrisEnergy

KrisEnergy Ltd. is an independent upstream company focused on the exploration for, and the development and production of oil and gas in Southeast Asia. Our strategy is to acquire assets in countries and basins where our technical team has expertise derived from decades of experience. Since 2009, we have built a portfolio of 14 contract areas in Bangladesh, Cambodia, Indonesia, Thailand and Vietnam, spanning the entire exploration-to-production life cycle. We operate 10 of the contract areas. For further information, visit www.krisenergy.com.

The Opportunity

Udan Emas PSC is situated onshore West Papua 75km from the Tangguh LNG plant and 60km from the recent onshore discoveries in the adjacent Kasuri Block (Figure1). The Udan Emas PSC was signed by KrisEnergy (Udan Emas) B.V. on July 20, 2012 through direct offer. KrisEnergy holds a 100% operating interest in the Block and has fulfilled all firm work commitments.

During 2014 Kris Energy acquired 300km of land and transition 2D seismic data in and around Teluk Arguni, filling the gap between the existing seismic data and the Lengguru Fold Belt to better define the prospectivity of the Block. KrisEnergy also embarked on an extensive geologic sampling and mapping program that has resulted in an improved understanding of the local surface geology. To date over 400 field samples and structural measurements have been taken in and around the Block along with the collection and analysis of shot-hole cutting samples from the seismic program. As a final enhancement to the geologic understanding of the Block, KrisEnergy also acquired 12,000km² of aerogravity and magnetic data across the Block and its surroundings. All data acquisition and final PSDM processing was completed during 2015.

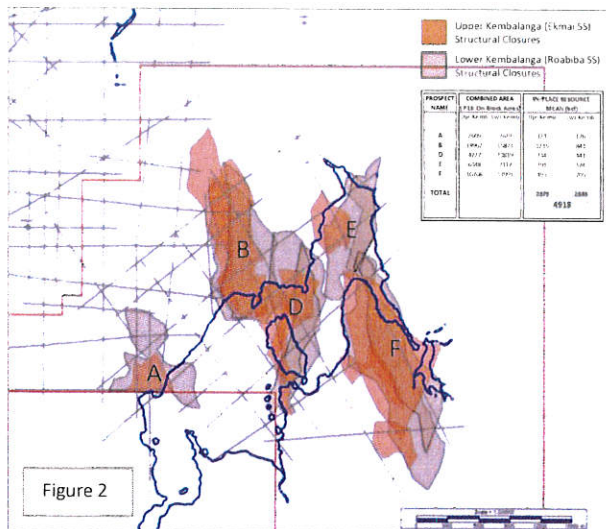


The Play

The targeted exploration play across Udan Emas is the proven Jurassic Roabiba Formation sandstone with the Cretaceous Ekmai Formation sandstone as a secondary target. The Roabiba Formation has been penetrated in numerous wells in the Bintuni Basin and forms the primary reservoir of the Vorwata and Wiriagar Fields presently producing gas to the BP Tangguh LNG plant. Structural traps in the frontal folds of the Lengguru Fold Belt can be charged by gas generated from deeply buried coals in the Triassic/Permian section found in the surrounding wells and in surface outcrop.

Resource Potential

Several large structural traps of the objective section have been identified on the block with a total prospect inventory gas resource potential of ~4.9 tcf (In-Place

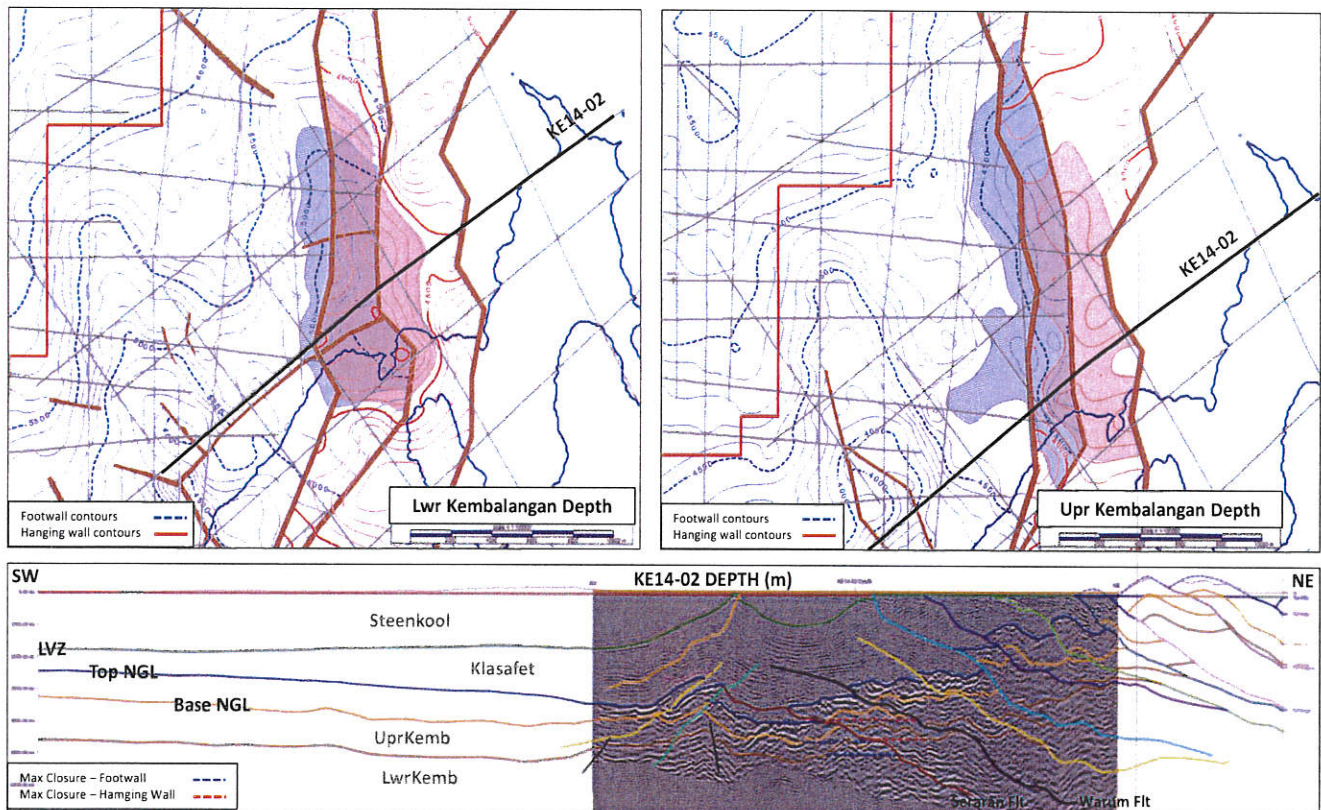


Pmean, Figure 2). All prospects are covered by sufficient seismic data to define the critical limits of structural closure. An additional ~4 tcfg resource potential has been identified in potential leads in the fold belt in areas with little or no seismic coverage.

The largest prospect, B, depicted below, holds a mean, in-place resource potential of ~2 tcfg in footwall and hanging wall structural traps on the Lower and Upper Kembalangan Group (Roabiba & Ekmai Formations). Total area of closure on each of the four stacked, structural closures making up the prospect averages approximately 16,000 acres across depths ranging from 3500-4500m TVDSS.

Seismic line KE14-02 (Figure 3) is a PSDM result stretched to time, followed by a vertical depth conversion using 2DMove.

Figure 3 – Prospect B: Footwall and Hanging Wall Traps on the Upper and Lower Kembalangan: 2 tcf mean resource potential



Terms

KrisEnergy is offering up to 49% working interest in the block at ground floor for pro-rata share of back costs and a full carry on an exploration well. For further information, terms, or to book a time in the data room, please contact:

Gadjah Eko Pireno,
Vice President Exploration (Indonesia)
Email: gadjah.pireno@krisenergy.com
Office: +62 21 29342703

Mike Whibley,
Vice President Technical (Corporate)
Email: mike.whibley@krisenergy.com
Office: +65 6538 5430